

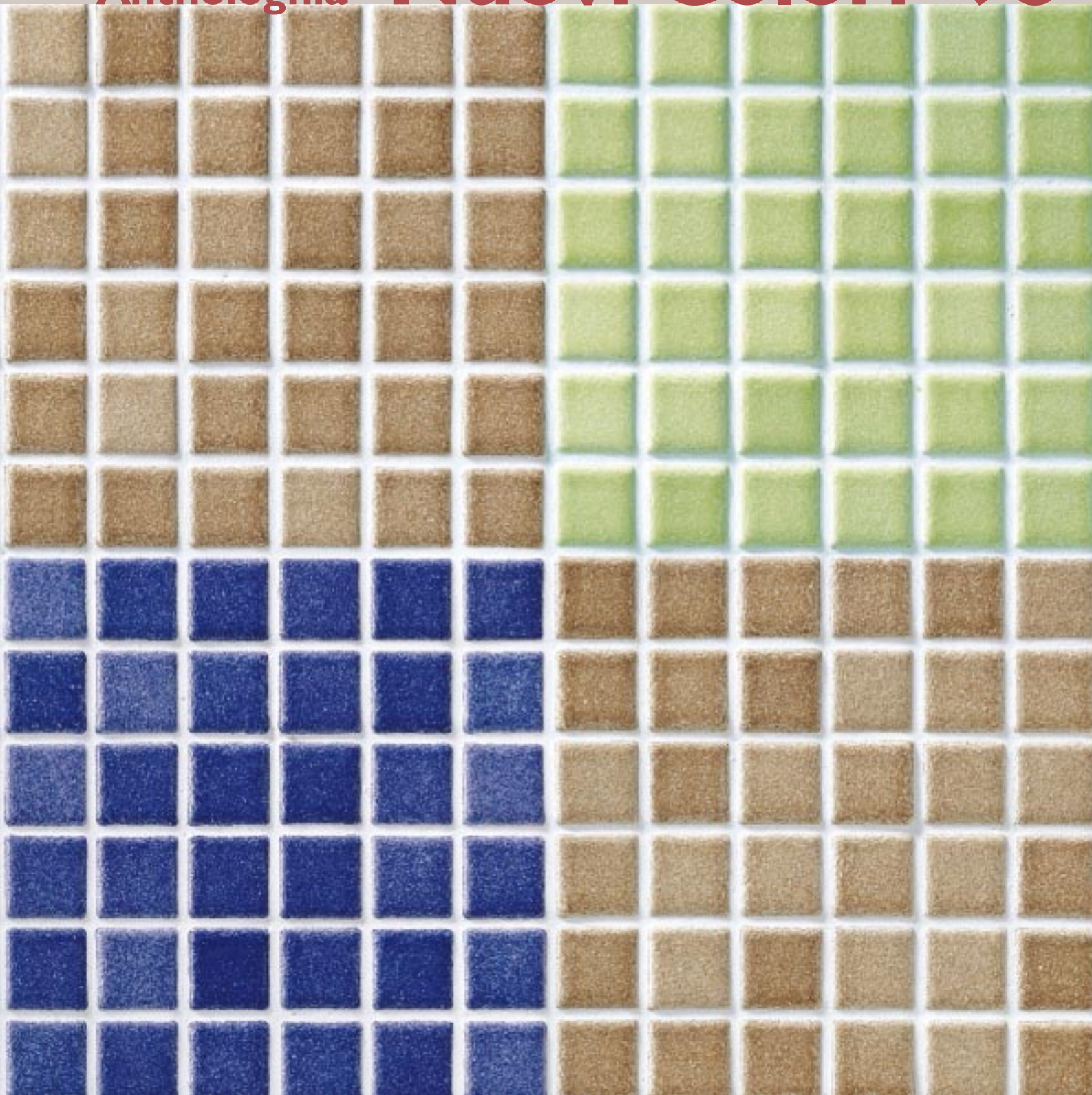
MOSAICO

appiani

I.C.R. Industrie Ceramiche Riunite spa

Anthologhia

# Nuovi Colori '98



# COLORI

colours couleurs Farben

flos



MOS 7025 2,5x2,5 cm. MOS 8025 5x5 cm.



MOS 9025 10x10 cm. MOS 1025 10x10 cm.

gladiolo

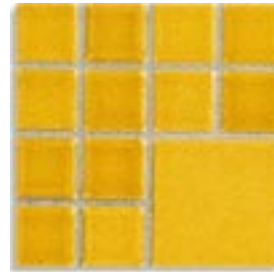


MOS 7028 2,5x2,5 cm. MOS 8028 5x5 cm.



MOS 9028 10x10 cm. MOS 1028 10x10 cm.

mimosa

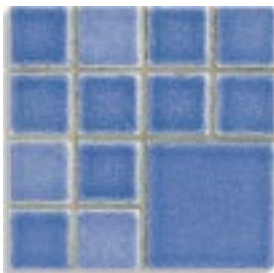


MOS 7029 2,5x2,5 cm. MOS 8029 5x5 cm.



MOS 9029 10x10 cm. MOS 1029 10x10 cm.

muscari

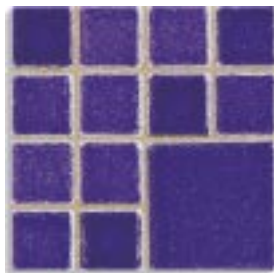


MOS 7030 2,5x2,5 cm. MOS 8030 5x5 cm.



MOS 9030 10x10 cm. MOS 1030 10x10 cm.

iris

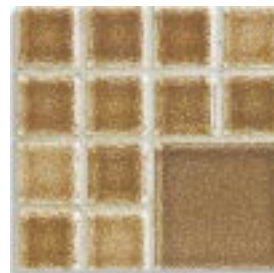


MOS 7032 2,5x2,5 cm. MOS 8032 5x5 cm.



MOS 9032 10x10 cm. MOS 1032 10x10 cm.

viburno



MOS 7027 2,5x2,5 cm. MOS 8027 5x5 cm.



MOS 9027 10x10 cm. MOS 1027 10x10 cm.

I nuovi colori delle tessere di mosaico in monopressocottura smaltata sono disponibili nei formati 2,5x2,5 cm. - 5x5 cm. - 10x10 cm.

*The new colours of the mosaic tesserae in glazed monopressocottura are available in the following sizes: 1"x1" - 2"x2" - 4"x4"*

*Les nouveaux coloris des tesselles en monopression émaillée sont disponibles dans les formats suivants: 2,5x2,5 cm. - 5x5 cm. - 10x10 cm.*

*Die neue Farben der Mosaiksteine in glasierten Monopressocottura sind in die folgende Formate erhältlich: 2,5x2,5 cm. - 5x5 cm. - 10x10 cm.*

ortensia



MOS 7031  
2,5x2,5 cm.

MOS 8031  
5x5 cm.



MOS 9031  
10x10 cm.

MOS 1031  
10x10 cm.

calendula



MOS 7026  
2,5x2,5 cm.

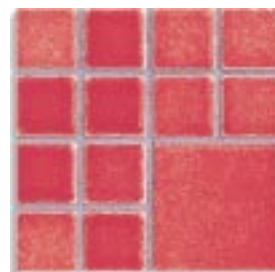
MOS 8026  
5x5 cm.



MOS 9026  
10x10 cm.

MOS 1026  
10x10 cm.

amarillide



MOS 7036  
2,5x2,5 cm.

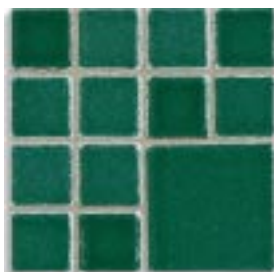
MOS 8036  
5x5 cm.



MOS 9036  
10x10 cm.

MOS 1036  
10x10 cm.

aralia



MOS 7033  
2,5x2,5 cm.

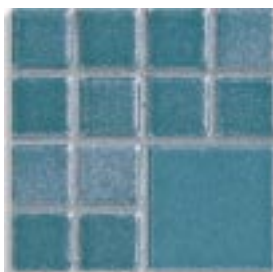
MOS 8033  
5x5 cm.



MOS 9033  
10x10 cm.

MOS 1033  
10x10 cm.

pilea



MOS 7034  
2,5x2,5 cm.

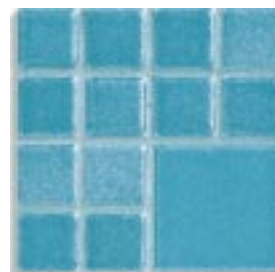
MOS 8034  
5x5 cm.



MOS 9034  
10x10 cm.

MOS 1034  
10x10 cm.

glaucia



MOS 7035  
2,5x2,5 cm.

MOS 8035  
5x5 cm.



MOS 9035  
10x10 cm.

MOS 1035  
10x10 cm.

La rete usata per l'incollaggio delle tessere è in fibra di vetro. Lo spessore delle tessere è di 7 mm.. Le tonalità riportate sul catalogo sono puramente indicative.

*The net used for the glueing of the tesserae is in fiberglass. The thickness of the tesserae is 7 mm. The shades shown in the catalogue are only approximate.*

*La trame utilisée pour le collage des tesselles est en fibre de verre. L'épaisseur des tesselles est 7mm.. Les tonalités dans le catalogue ne sont qu'indicatives.*

*Das Netz für das Aufkleben der Mosaiksteine ist in Glasfaser. Die Stärke der Mosaiksteine ist 7 mm. Die im Katalog angegebenen Farbtöne sind nur annähernd.*

